



Since 2017

**Unmatched Value in the
Sri Lankan Real Estate Market**



Dear Future MVIVO Home Owner,

At MVIVO, we share your understanding that choosing a home is a significant decision that requires careful thought. We believe that real estate value, quality of life, and sustainability are vital considerations in this process. Our aim is to take on the responsibility of playing a crucial role in helping you achieve your desired outcome. The satisfaction we derive from delivering exceptional homes is immeasurable and serves as a constant motivation for our team. Every member of the MVIVO family is dedicated to successfully completing each project and providing ongoing support and assistance in the years to come.

Our business value is derived from the sum of customer value and the increased real estate value we bring to your property. Our passion for architecture and our unwavering commitment to quality is evident in every aspect of our work. We invite you to immerse yourself in this "unique home story" and to reach out to us to discuss your project.

We approach every design and decision with a focus on individuality. We understand that your home is a reflection of your personal identity, and we are dedicated to safeguarding and preserving that vision throughout the entire process—from our initial meeting to obtaining permits, from laying the foundation stone to many years after the project's completion.

We invite you to explore the possibilities with MVIVO, and together we can create a home that not only meets your needs but also exceeds your expectations. Your story has a place in our organization, and we are excited to embark on this journey with you. When you're ready, please don't hesitate to contact us. We look forward to bringing your dream home to life.



Kjell Van Doren
Chief Executive Officer

Soulful Symphony

The Essence of Togetherness



"Where the melody of Michael's personality harmoniously blends with an innovative architectural approach."

From the mesmerizing views that inspire his melodies to the meticulously designed spaces that invite shared experiences, every note of this family home tells a story of unity and harmony.

With MVIVO's engineering technology and European-inspired craftsmanship, the ultimate goal was to create a symphony of design that embraces Michael's vision and leaves an indelible mark on the landscape.

Step into a world where architecture and personality merge and let Soulful Symphony transport you to a realm where togetherness thrives, and melodies come alive.

Lakshan Theverapperuma
Head Chartered Architect



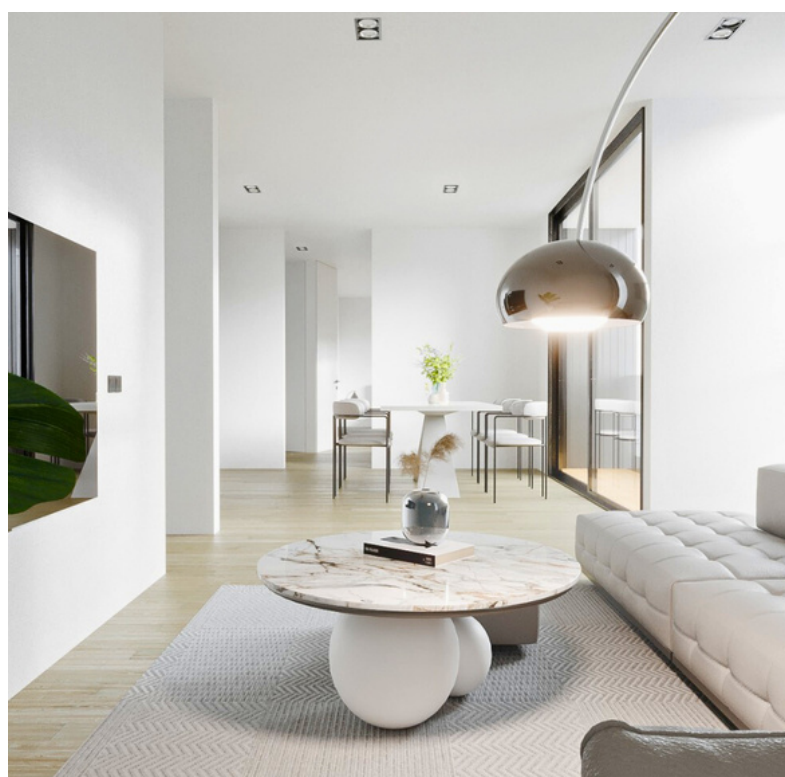


Embracing Nature's Splendour

Embodied in this remarkable house is a captivating tale of expert craftsmanship, meticulous planning, and an unwavering commitment to creating a profound bond between a home and its residents. Head Chartered Architect at MVIVO, Lakshan, takes us on a journey, unveiling the remarkable story behind this architectural masterpiece.



"I am not exaggerating when I say this design of Michael's home was an absolute joy. It was a project where the *greatest limitations led us to the most creative solutions*, revealing a beauty that would have otherwise remained undiscovered. Despite the challenges posed by the site elevations, soil conditions, and surrounding areas, the result surpassed all expectations and became truly stunning."



In collaboration with our discerning client, we crafted a home that surpassed his wildest imagination, capturing his unique essence and translating his dreams into a tangible reality.

The result is a home that exudes warmth and luxury, a testament to our expertise in creating spaces that elevate the living experience to new heights.



Building for Longevity and Legacy

At MVIVO, we know that a solid foundation is essential for building a home that will stand the test of time. This MVIVO home stands tall on a waffle raft foundation, ensuring unwavering stability and strength.

Before construction begins, we conduct a soil test to determine the soil conditions at the site. This information helps us to design the foundation to best distribute the load.

Column footings were adapted to distribute the load into a subsoil based on the soil condition after a pit test. This ensures that the foundation is properly supported and that the home is safe and secure.

But we don't stop there. To combat the challenges posed by Sri Lanka's climate, we go the extra mile to protect our homes from moisture-related issues.

By incorporating a building film and decoupling layer in the foundation, we shield our homes from the external elements, ensuring that they remain pristine and resilient for years to come.

Further, our homes boast a *mechanical anchored cold-formed steel frame*, a true testament to our unwavering commitment to quality and expertise. This steel frame provides the backbone of the structure, offering unparalleled strength and a stable living environment for its occupants.

With these features, like any other MVIVO home, Michael's home is designed to be solid, durable, and able to withstand various environmental factors.

We believe that your home should be a sanctuary, a place where you can truly thrive.





Nature's Panorama

The ever-evolving panorama of the surrounding forest and lake sparks curiosity and awe in every room in this home. We designed the home to maximize this advantage, with large windows and open spaces that bring the beauty of nature inside.



Windows

Beautiful floor-to-ceiling slimline aluminum doors and windows with a 24mm Argon Filled cavity creates a protective layer between the home and the outside environment, effectively reducing heat loss and gain, while still allowing abundant natural light to illuminate the space.

The slimline aluminum frames provide a sleek and modern appearance, enhancing the aesthetics but also reducing the need for artificial lighting during day time, contributing to energy savings.

Roof

The roof is covered with a 1.2mm TPO (thermoplastic polyolefin) roofing membrane mechanically fastened and welded, with adhered roof edge and fixing plates. The most common TPO material is bright white with highly reflective properties which also helps in maintaining thermal efficiency.

This bright white roof installation can reflect UV rays and heat from the building, saving money throughout the year by reducing energy usage to cool the building interior, especially in tropical climates where temperatures are consistently warm.

This makes it an excellent choice for withstanding the external elements and ensuring the longevity of the roof structure.

Overall, the combination of double-glazed doors and windows with argon cavity, along with insulated walls & roofing contributes to the building's energy efficiency, comfort, and protection from external elements.



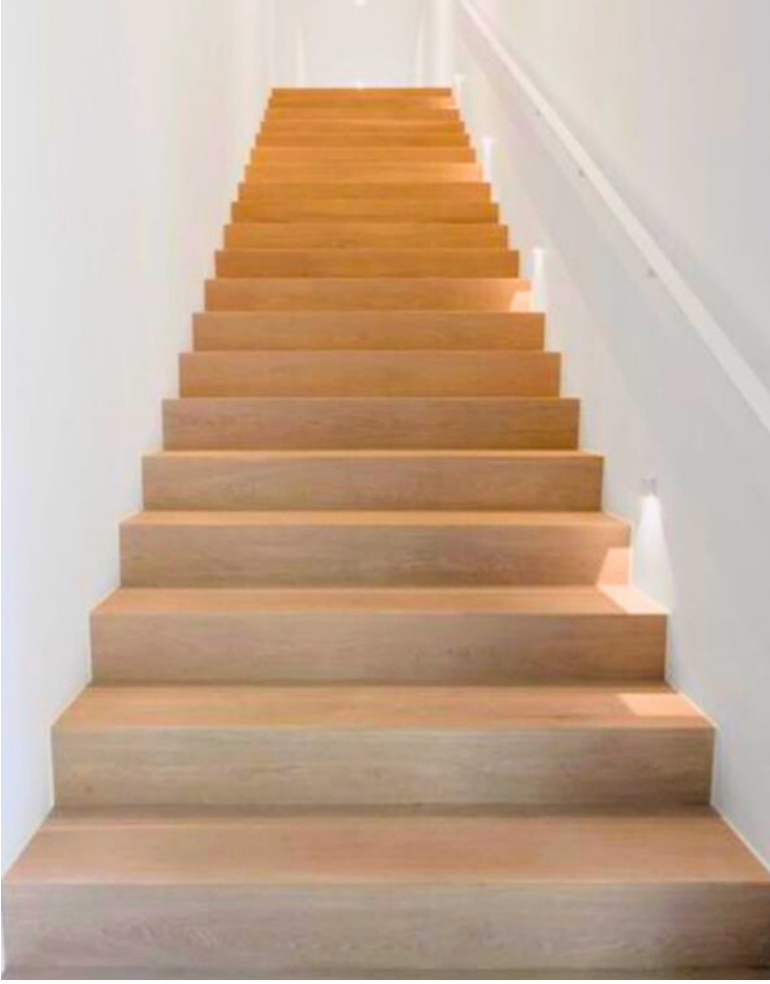


Architectural Excellence

The home exudes warmth and unity with its inviting atmosphere. The ground floor features a pristine white aesthetic, while the first floor, adorned in black, creates a *captivating contrast between communal and individual spaces*. Surrounded by lush greenery, the house stands as a testament to architectural excellence.

Michael finds joy in hosting and entertaining guests, often taking centre stage to create unforgettable experiences for his loved ones. Our meticulously designed patio and interconnected open spaces provide the perfect setting for these gatherings. A spacious balcony, complete with a permanent BBQ installation, allows for shared memories amidst a stunning vista.

An integrated wine cellar adds a captivating touch to the lower level, ensuring easy access for guests and effortless house tours.



Unified Strength

When Michael embarked on the journey of building his dream home in Nuwara Eliya, he had a clear vision of creating a sustainable masterpiece that harmonized with the surrounding environment. The location's proximity to forest reserves and the region's climatic variations demanded a home that would leave a minimal ecological impact and ensure the utmost safety.

Navigating the intricate process of constructing a sustainable home in Nuwara Eliya proved to be a daunting task for Michael. Fortunately, MVIVO came to his aid, bringing their wealth of technical expertise and unwavering commitment to guide him through the complex procedures and ensure adherence to the stringent guidelines set by the National Building Research Organisation (NBRO).

"Our team possesses the specialized knowledge and experience to assist clients in realizing their vision of eco-friendly homes that perfectly blend with the ecological fabric of the area" affirmed Sandun Lakmal, Head of Projects.



Structure

The exterior showcases triple-layered synthetic stucco and 3D wood polymer composite cladding, combining aesthetics with protective features. The walls are built using cavity wall construction, featuring a triple-layered weather-resistant barrier and drainage layer for durability and weather resistance.

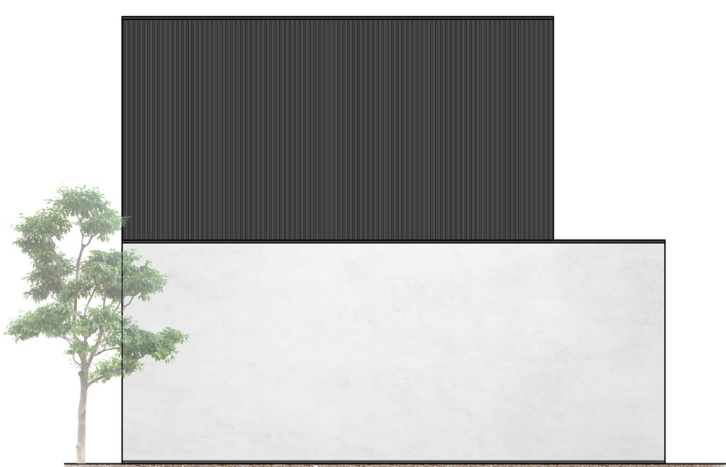
Underground connections of downpipes and catch basins with water traps provide maintenance-free operation.

MVIVO builds homes to international standards & codes which provide including 20-years structural warranty. Further, a 5-year service and maintenance warranty ensures worry-free upkeep, while secured waterproofing prevents leakages, cracks, fungus, and mold.





Front



Rear



Left

Beyond Bricks

During the pre-build stage, our architects meticulously calculated and forecasted all necessary materials, down to the finest details such as the number of screws. This precision, enabled by our cutting-edge technology, instilled trust in Michael and minimized investment risks.

Michael's worldly experiences have shaped his preference for MVIVO's innovative approach over conventional Sri Lankan home-building methods.

We have installed a ventilation system called the C+ ventilation house system, which is more efficient than traditional natural ventilation. This system ensures high air quality in homes by automatically extracting stale air. It makes homes more comfortable and reduces energy costs.

The home features a 7-layer wall structure, as well as insulated external walls, slab, and roof, which address concerns of moisture and dust. These features instill confidence in the durability and comfort of the hilltop abode.

All solid woods and components used in the construction are sustainably sourced and FSC certified. Additionally, surfaces have been treated for resistance to termites, fungi, and corrosion.

Michael's collaboration with us has been a transformative journey, where he embraced new insights and expressed deep appreciation for our dedicated efforts.

"Our homes are not just built to last; they are a testament to multi-generational legacies."



The Heart of Togetherness

Acoustic Insulation

In their quest for a dedicated music room, this couple's passion for music and togetherness was met with MVIVO's acoustic insulation, ensuring quiet musical bliss.

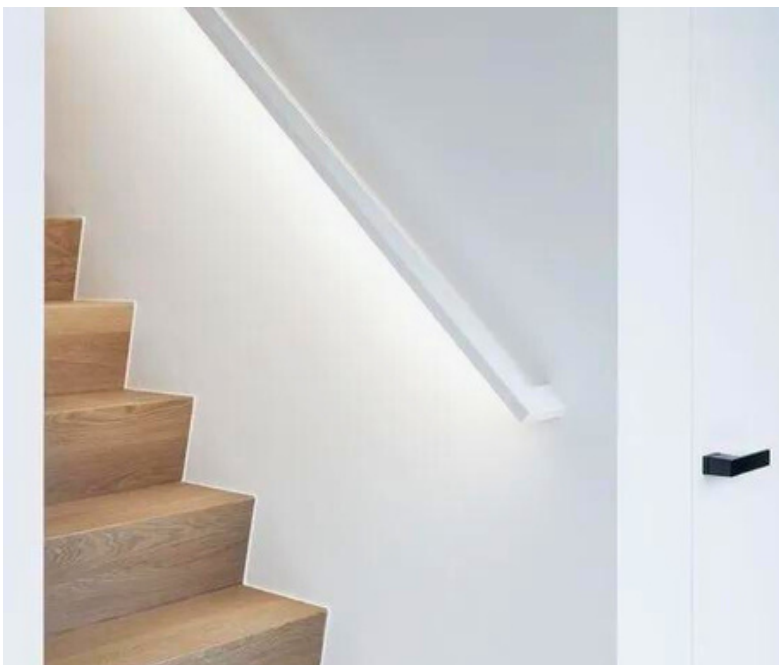
Interior finishes enhance the living experience, featuring stone polymer composite (SPC) flooring with a waterproof interlocking system. This system utilizes glueless locking technology combined with an IXPE dampening layer, providing shock resistance and sound reduction performance on the floor.



SMART Lights

The home includes state-of-the-art lighting automation with dimmable ceiling LED lights and a complete house light automation plan that can be adjusted to create the ideal atmosphere for any occasion via remotes.

The motion sensors and light sensors work together to provide an energy-efficient and convenient lighting experience. The twilight sensor activates the lights at dusk and deactivates them at dawn. Further, the light timing can be adjusted or synchronized with the GPS system via the mechanical room.



The enclosed straight staircase offers integrated LED lights and a motion sensor at entry points. The lighting automation in MVIVO homes is just one of the many features that make them exceptional.

Michael marveled at our space planning and efficient utilization of every square inch, enabling long-term savings for him. With a design that allows flexibility for future interior redesigns, his children can continue to shape the home according to their evolving tastes and desires.



Lakshan explains, "The ecological value lies in the fact that it occupies less open space. Essentially, this masterpiece combines the advantages of a single-family home, a multigenerational home, an interconnected home, and an assisted living home. It enables collective living without sacrificing privacy, comfort, and aesthetics."



Future in Mind

Within their home, Michael's wife discovered a sanctuary of peace—the mechanical room. This dedicated space houses vital Mechanical, Electrical, and Plumbing (MEP) systems, seamlessly integrating comfort, safety, and control.



With a simple touch of a button, she effortlessly managed and monitored various essential systems. The Solar Boiler, The House ventilation system, the Pressure booster pump, the Water filtration system, the Lighting automation system, The Network cabinet, and the Wall-integrated power distribution which allows for organized energy distribution throughout the home.



Michael's wife gained the ability to handle any situation, ensuring their safety and peace of mind, even in Michael's absence.

At MVIVO, we recognize the significance of empowering homeowners with comprehensive control and delivering the tools for a truly harmonious and secure living experience.

Provisions

MVIVO Homes are designed with the future in mind, offering a range of provisions to enhance your living experience. These provisions include provisions for solar panels. By providing easy access, we make it convenient for homeowners to perform necessary maintenance tasks.



Additionally, the kitchen is equipped with gas lines & electrical provisions, catering to your cooking, baking, and entertaining needs.

For added convenience, we offer provisions for washing machines/ dryers while including a utility sink, simplifying your laundry routine. Alongside these features, we provide various customization options to personalize your MVIVO Home.



Bathrooms

"Wellness bathrooms that will live up to your standards." Micheal values a sleek, uncluttered bathroom. MVIVO's bathrooms are designed for convenience with concealed thermostat shower systems, anti-slip, anti-bacterial stone resin composite shower floor and wall tiles, and wall-hung toilets with concealed cisterns and integrated bidet showers. Aesthetically pleasing and easy for cleaning.



Kitchen

Michael was excited to move into his new home. He had been dreaming of this day for years, and he couldn't wait to start cooking in the new kitchen with the kids. We ensured that Michael's kitchen is equipped to accommodate all the appliances and electrical needs seamlessly. In addition to electrical provisions, we took care of essential aspects such as water supply, wastewater drainage, and ventilation ducting.

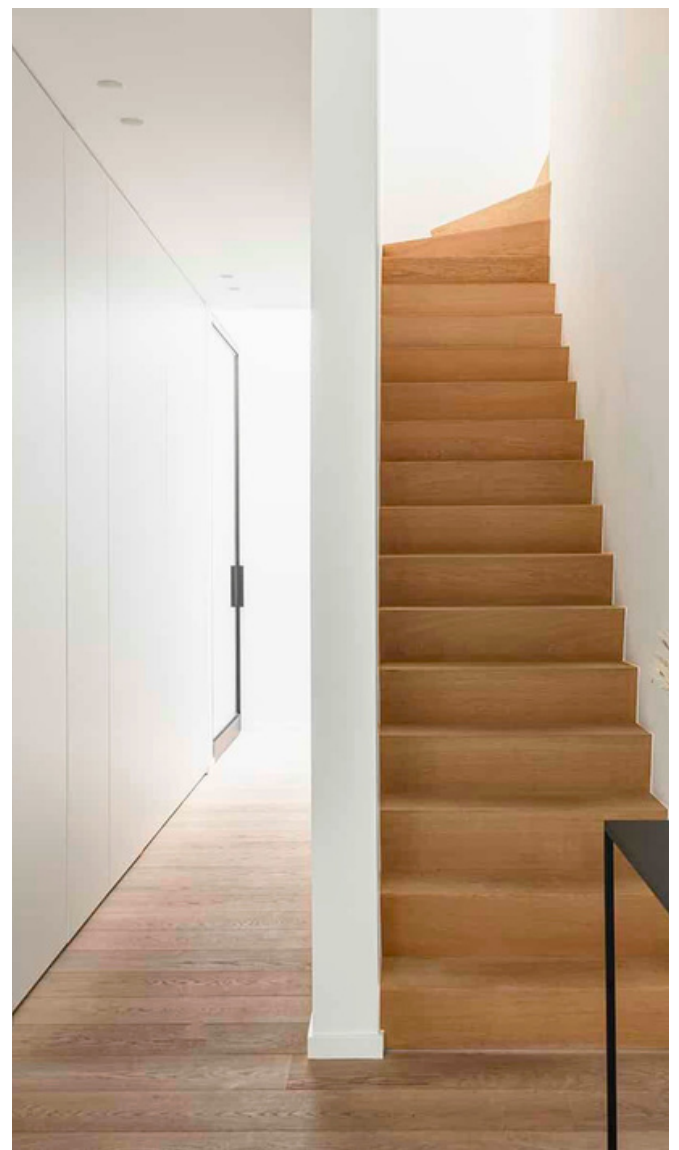
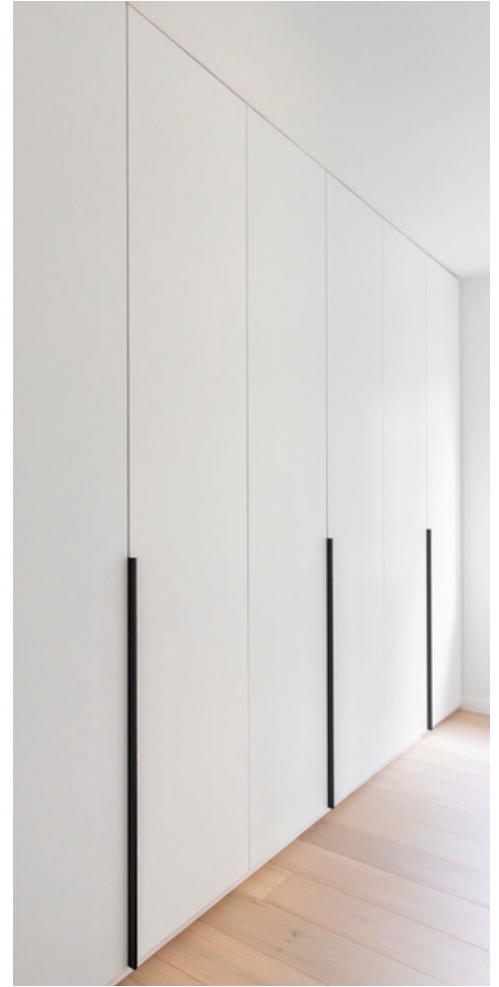
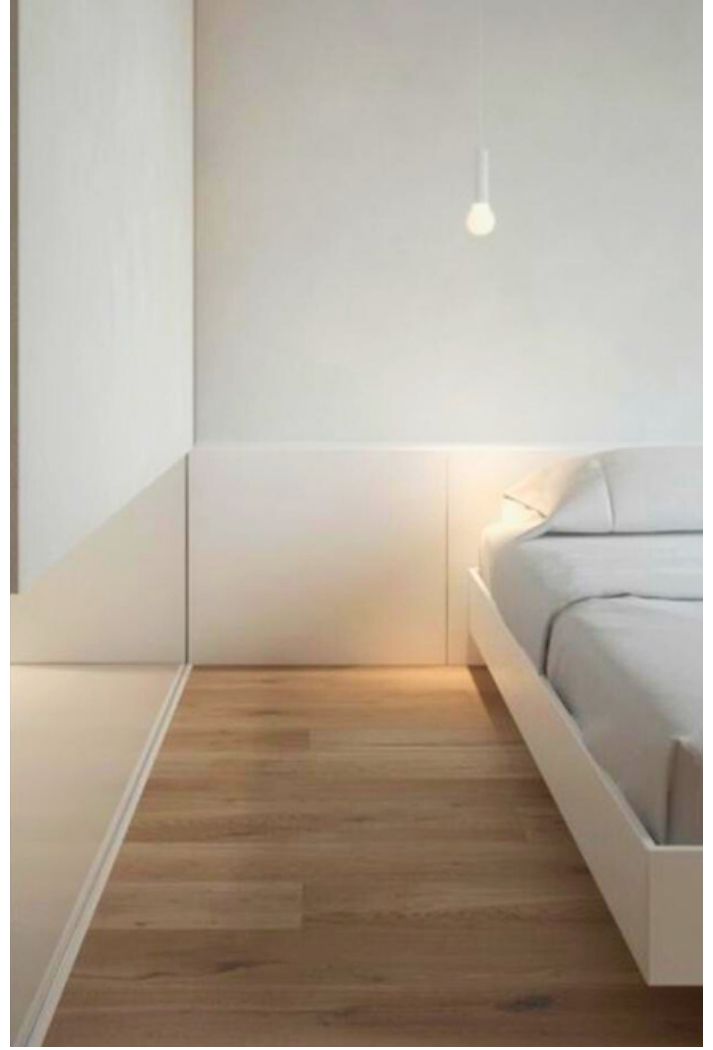


Michael knew he needed to get his kitchen properly ventilated. He didn't want the smoke and fumes to fill the air and make his family sick. We understand the importance of a well-functioning air extraction system, particularly in the kitchen as it is an interconnected home.

At MVIVO, we go beyond design and take pride in offering comprehensive solutions and technical support to meet various requirements. Our ventilation solutions effectively remove cooking fumes and odors, ensuring a clean and fresh environment for the family. Our ducted systems efficiently vent the air outside, maintaining a pleasant atmosphere in the home.

With MVIVO, you can trust that in every detail, our team is dedicated to finding the best solutions and offering technical support to meet your unique requirements.

MVIVO Home Designs



Top 10 things to do when building a new home:

#1 Contact us.

We'll handle the other 9!

Information



"I'm here to make sure you have a positive experience with our company. If there's anything I can do to help, please don't hesitate to reach out."

Shalani Gunaratne
Assistant Manager - Customer Relations
+94 76 360 3869

Reach us via

Direct Line
+94 117 170 000

Reach via Messenger
Tap here to chat

WhatsApp
Tap here to chat

Directions to our office

Head Office
No. 278, Union Place,
Colombo 00200.

Tap here to locate us on maps 

Connect with us

For Appointments
Tap here to book

Share your experience
Tap here to review us

For latest updates
Tap here to view

Home Guide Book 2023

© 2023 MVIVO Pvt. Ltd

